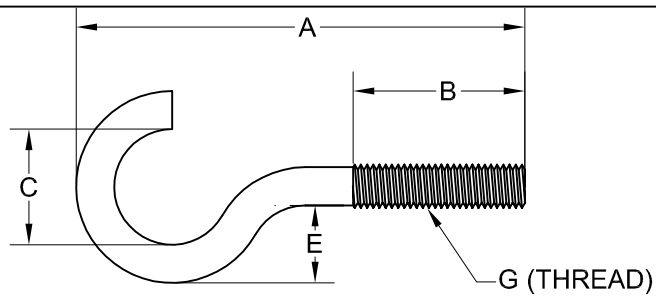
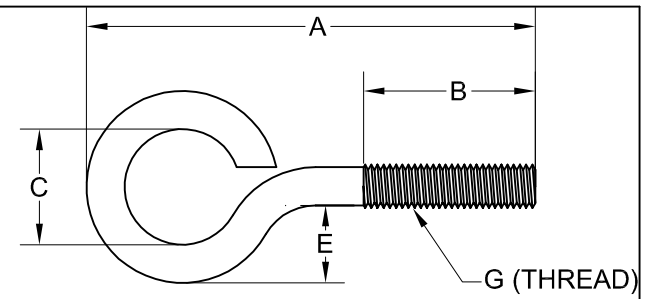


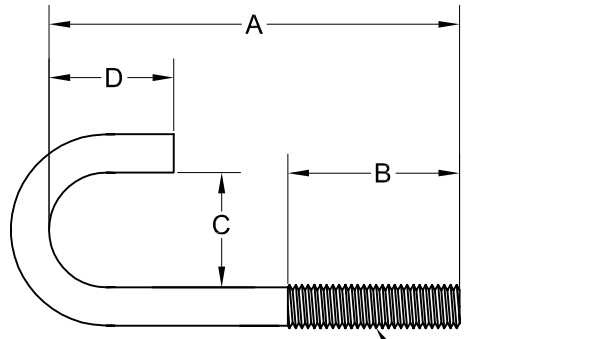
**1 Eye Bolt, Open Anchor Ring**



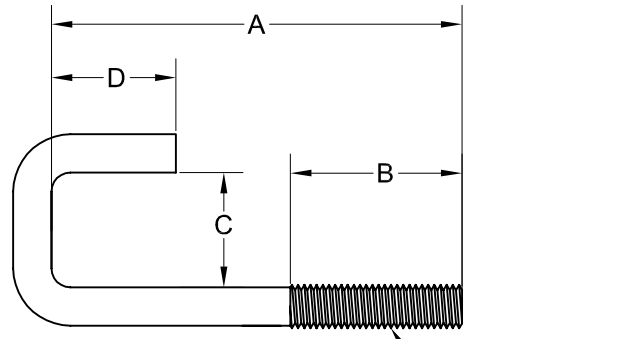
**2 J Bolt, Offset Round Bend**



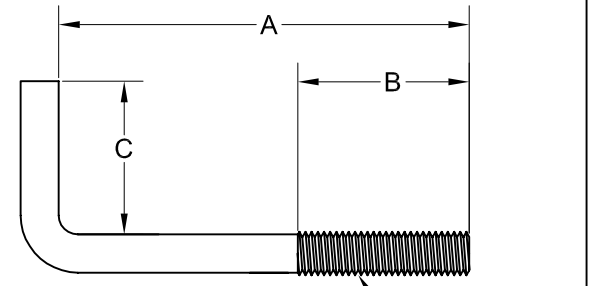
**3 Eye Bolt, Closed Anchor Ring**



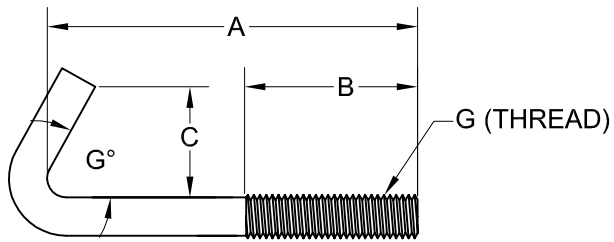
**4 Hook Bolt, Round Bend**



**5 Hook Bolt, Square Bend**



**6 Hook Bolt, Right Angle Bend**



**7 Hook Bolt, Acute Angle Bend**

	A	B	C	D	E	F	G
1							
2							
3							
4							
5							
6							
7							

**CUSTOMER APPROVAL**  
AS ROLLED PART DRAWING WILL  
BE USED FOR FINAL INSPECTION

THIS DRAWING IS THE PROPERTY  
OF WESTLAND FASTENERS LTD  
AND MAY NOT BE USED IN WHOLE  
OR IN PART WITHOUT  
AUTHORIZATION

REVISION	DATE	CHANGE OR ADDITION		
DRAWN		<b>WESTLAND FASTENERS Ltd.</b> P.O. BOX 1052 WINNIPEG, MANITOBA R3C 2X4 PHONE: (204) 224 - 1654 FAX: (204) 224 - 5337		
APPD				
UNITS IMPERIAL				
TOLERANCES UNLESS OTHERWISE SPECIFIED		<b>BENT BOLT</b>		
.XX ±.010 .XXX ±.005 ANGL. ± 1				
MATERIAL		DWG No.	REV.	FINISH
SCALE DO NOT SCALE		DATE		SHEET